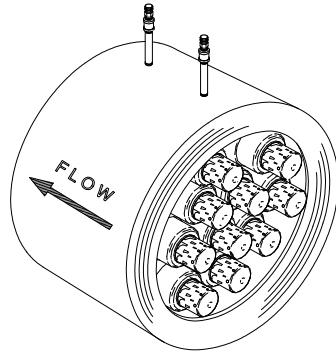
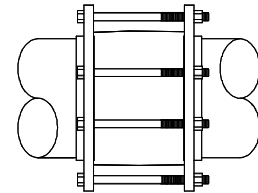
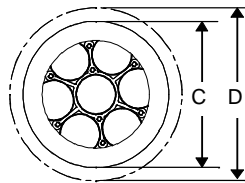
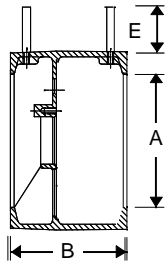


CLASS 150 BRONZE VALVE BODY

SPECIFICATIONS



**PSI/Temperature Rating:** 250 PSI / 350° F  
**Cartridge:** AISI Type 304 stainless steel  
 AISI Type 17-7 PH stainless steel spring  
**Body Material:** Naval Bronze ASTM B61-922  
**Body Tappings:** 1/4" NPT with P/T test valves  
**Assembly:** Valve comes fully assembled. Pressure and Temperature extensions are shipped loose.  
**Flanges:** Sizes 4" - 20" are compatible with ANSI B 16.5-1968 150 lb. steel flanges. Cast Iron flanges are compatible with ANSI B 16.1-1967 125 lb.



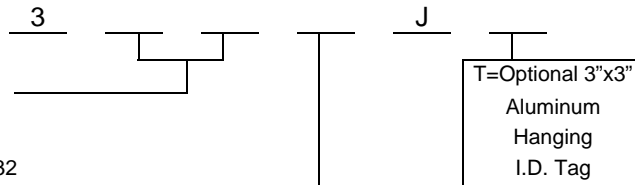
DIMENSIONS & WEIGHTS (NOMINAL)

| A<br>LINE<br>SIZE | MODEL<br>NO. | B<br>(+/-0.030) | C<br>(+/-0.060) | D<br>REF ONLY<br>FLG. DIA. | E    | STUDS <sup>1</sup> (SUPPLIED<br>BY GRISWOLD) |       | WEIGHT<br>(LBS.) |
|-------------------|--------------|-----------------|-----------------|----------------------------|------|--|-------|------------------|
|                   |              |                 |                 |                            |      | QTY  | SIZE  |                  |
| 3                 | 329_J        | 6.75            | 5.38            | 7.50                       | 5.50 | 4  | 5/8   | 17               |
| 4                 | 332_J        | 7.75            | 6.88            | 9.00                       | 5.50 | 8  | 5/8   | 33               |
| 6                 | 334_J        | 7.25            | 8.62            | 11.00                      | 5.50 | 8  | 3/4   | 42               |
| 8                 | 337_J        | 7.25            | 10.88           | 13.50                      | 5.50 | 8  | 3/4   | 57               |
| 10                | 368_J        | 8.00            | 13.44           | 16.00                      | 5.50 | 12   | 7/8   | 93               |
| 12                | 369_J        | 8.00            | 16.00           | 19.00                      | 5.50 | 12   | 7/8   | 137              |
| 14                | 339_J        | 8.00            | 17.63           | 21.00                      | 5.50 | 12   | 1     | 177              |
| 16 <sup>2</sup>   | 384_J        | 9.50            | 20.12           | 23.50                      | 5.50 | 16   | 1     | 291              |
| 18                | 385_J        | 9.50            | 21.50           | 25.00                      | 5.50 | 16   | 1-1/8 | 405              |
| 20                | 338_J        | 11.00           | 23.88           | 27.50                      | 5.50 | 20   | 1-1/8 | 520              |

MODEL NUMBER SELECTION<sup>3</sup>

Select a size (3=29, 4=32, 6=34, 8=37, 10=68, 12=69, 14=39, 16=84, 18=85, 20=38)

Select a PSID control range (STD: 1=1-20 or 4-20, 2=2-32 or 8-32, 4=4-57, 8=8-128; HI-FLOW: 3=3-18, 5=5-32, 7=7.5-32)



NOTES

<sup>1</sup> Plated Steel Studs and Nuts are supplied by Griswold.  
<sup>2</sup> 16" and larger are supplied with an eyebolt for lifting.  
<sup>3</sup> Model no. and flow rate are indicated on label affixed to body.

Replaces form F-2876

This specification © 2012 Griswold Controls

FLOW RATE TABLES PER TYPE OF CARTRIDGE (+/-5%)

| TYPE OF CARTRIDGE: |           |                                | STANDARD FLOW |        |        |        |
|--------------------|-----------|--------------------------------|---------------|--------|--------|--------|
| LINE SIZE          | MODEL NO. | NOMINAL CONTROL RANGE (PSID)   | 1.5-20        | 3.2-32 | 5.8-57 | 13-128 |
|                    |           | HEAD LOSS IN FEET <sup>4</sup> | 3.0           | 7.4    | 13.4   | 30.0   |
|                    |           | MIN. AVAILABLE GPM             | 14            | 17.5   | 23.33  | 35     |
|                    |           | GPM INCREMENTS                 | 2.0           | 2.5    | 3.33   | 5.0    |
| 3                  | 329_      | Maximum GPM                    | 60            | 75     | 100    | 150    |
| 4                  | 332_      | Maximum GPM                    | 120           | 150    | 200    | 300    |
| 6                  | 334_      | Maximum GPM                    | 240           | 300    | 400    | 600    |
| 8                  | 337_      | Maximum GPM                    | 420           | 525    | 700    | 1,050  |
| 10                 | 368_      | Maximum GPM                    | 660           | 825    | 1,100  | 1,650  |
| 12                 | 369_      | Maximum GPM                    | 900           | 1,125  | 1,500  | 2,250  |
| 14                 | 339_      | Maximum GPM                    | 1,140         | 1,425  | 1,900  | 2,850  |
| 16                 | 384_      | Maximum GPM                    | 1,440         | 1,800  | 2,400  | 3,600  |
| 18                 | 385_      | Maximum GPM                    | 1,860         | 2,325  | 3,100  | 4,650  |
| 20                 | 338_      | Maximum GPM                    | 2,220         | 2,775  | 3,700  | 5,550  |

| TYPE OF CARTRIDGE: |           |                                | STANDARD FLOW HIGH CAPACITY |      |
|--------------------|-----------|--------------------------------|-----------------------------|------|
| LINE SIZE          | MODEL NO. | NOMINAL CONTROL RANGE (PSID)   | 4-20                        | 8-32 |
|                    |           | HEAD LOSS IN FEET <sup>4</sup> | 9.2                         | 18.4 |
|                    |           | GPM INCREMENTS                 | 20.0                        | 25.0 |
| 3                  | 329_      | Minimum GPM                    | 90                          | 110  |
|                    |           | Maximum GPM                    | 130                         | 160  |

| TYPE OF CARTRIDGE: |                     |                     | HI - FLOW              |                       |                      |                       |                      |                        |
|--------------------|---------------------|---------------------|------------------------|-----------------------|----------------------|-----------------------|----------------------|------------------------|
| LINE SIZE          | MODEL NO. CLASS 150 | MODEL NO. CLASS 300 | CONTROL RANGE (PSID)   | 3-18 (LOW INCREMENTS) | 3-18 (NO INCREMENTS) | 5-32 (LOW INCREMENTS) | 5-32 (NO INCREMENTS) | 7.5-32 (NO INCREMENTS) |
|                    |                     |                     | MAX. PRES. DIFF. (PSI) | 18                    | 18                   | 32                    | 32                   | 32                     |
|                    |                     |                     | HEAD LOSS IN FEET      | 5.8                   | 5.8                  | 11.5                  | 11.5                 | 17.5                   |
|                    |                     |                     | GPM INCREMENTS         | 2.0                   | SEE ACTUAL FLOWS     | 2.5                   | SEE ACTUAL FLOWS     | SEE ACTUAL FLOWS       |
| 3                  | 329_                | 345_                | Minimum GPM            | N/A                   | N/A                  | N/A                   | N/A                  | N/A                    |
|                    |                     |                     | Maximum GPM            | N/A                   | N/A                  | N/A                   | N/A                  | N/A                    |
| 4                  | 332_                | 346_                | Minimum GPM            | 114                   | 200                  | 152.5                 | 335, 360,            | 500, 600               |
|                    |                     |                     | Maximum GPM            | 160                   |                      | 275                   | 400                  |                        |
| 6                  | 334_                | 347_                | Minimum GPM            | 114                   | 400                  | 152.5                 | 735, 760,            | 1000, 1200             |
|                    |                     |                     | Maximum GPM            | 360                   |                      | 675                   | 800                  |                        |
| 8                  | 337_                | 348_                | Minimum GPM            | 114                   | 700                  | 152.5                 | 1335, 1360,          | 1800, 2100             |
|                    |                     |                     | Maximum GPM            | 660                   |                      | 1,275                 | 1400                 |                        |
| 10                 | 368_                | 343_                | Minimum GPM            | 114                   | 1100                 | 152.5                 | 2135, 2160,          | 2400, 3000,            |
|                    |                     |                     | Maximum GPM            | 1,060                 |                      | 2,075                 | 2200                 | 3300                   |
| 12                 | 369_                | 344_                | Minimum GPM            | 114                   | 1500                 | 152.5                 | 2935, 2960,          | 3500, 3900             |
|                    |                     |                     | Maximum GPM            | 1,460                 |                      | 2,875                 | 3000                 | 4500                   |
| 14                 | 339_                | 349_                | Minimum GPM            | 114                   | 1900                 | 152.5                 | 3735, 3760,          | 4500, 5100             |
|                    |                     |                     | Maximum GPM            | 1,860                 |                      | 3,675                 | 3800                 | 5700                   |
| 16                 | 384_                | N/A                 | Minimum GPM            | 114                   | 2400                 | 152.5                 | 4735, 4760,          | 5400, 6000             |
|                    |                     |                     | Maximum GPM            | 2,360                 |                      | 4,675                 | 4800                 | 6600, 7200             |
| 18                 | 385_                | N/A                 | Minimum GPM            | 114                   | 3100                 | 152.5                 | 6135, 6160,          | 6900, 7500, 8100       |
|                    |                     |                     | Maximum GPM            | 3,060                 |                      | 6,075                 | 6200                 | 8700, 9300             |
| 20                 | 338_                | 350_                | Minimum GPM            | 114                   | 3700                 | 152.5                 | 7335, 7360,          | 8700, 9300, 9900,      |
|                    |                     |                     | Maximum GPM            | 3,660                 |                      | 7,275                 | 7400                 | 10500, 11100           |

NOTES

<sup>4</sup> Head Loss in Feet is provided for pump head calculations. (1 PSI = 2.307 Feet of Water)  
Replaces form F-2876

This specification © 2012 Griswold Controls