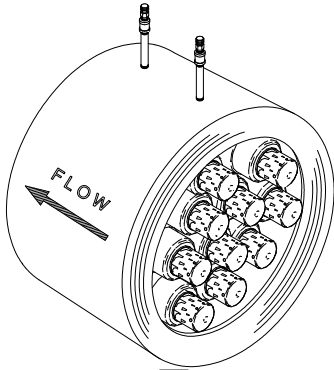
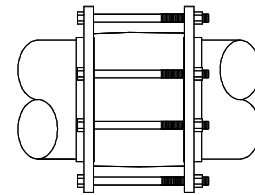
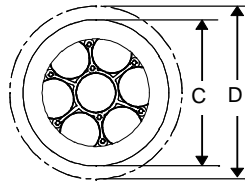
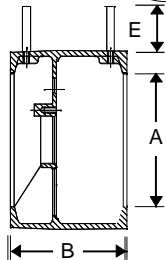


CLASS 150 WAFER

SPECIFICATIONS



PSI/Temperature Rating: 200 PSI / 250° F
Cartridge: AISI Type 304 stainless steel
 AISI Type 17-7 PH stainless steel spring
Body Material: 3"-14": Ductile Iron ASTM A536 GR60-40-18,
 16"-24": Gray Iron ASTM A126-61T, Class 20
Body Tappings: 1/4" NPT with P/T test valves
Assembly: Valve comes fully assembled. Pressure and Temperature extensions are shipped loose.
Flanges: Sizes 3" - 20" are compatible with ANSI B 16.5-1968 150 lb. steel flanges. Cast Iron flanges are compatible with ANSI B 16.1-1967 125 lb.



DIMENSIONS & WEIGHTS (NOMINAL)

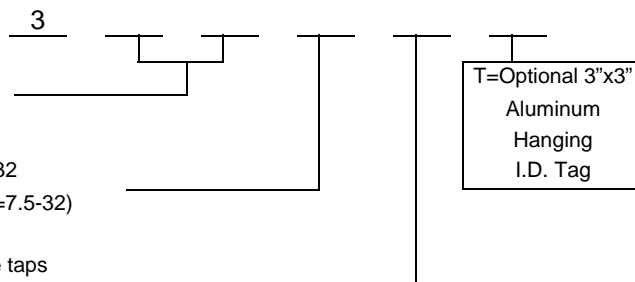
A LINE SIZE	MODEL NO.	B (+/- .030)	C (+/- .060)	D REF ONLY FLG. DIA.	E	STUDS ¹ (SUPPLIED BY GRISWOLD)		WEIGHT (LBS.)
						QTY	SIZE	
3	329	6.75	5.38	7.50	5.50	4	5/8	17
4	332	7.75	6.88	9.00	5.50	8	5/8	33
6	334	7.25	8.62	11.00	5.50	8	3/4	42
8	337	7.25	10.88	13.50	5.50	8	3/4	57
10	368	8.00	13.44	16.00	5.50	12	7/8	93
12	369	8.00	16.00	19.00	5.50	12	7/8	137
14	339	8.00	17.63	21.00	5.50	12	1	177
16 ²	384	9.50	20.12	23.50	5.50	16	1	291
18	385	9.50	21.50	25.00	5.50	16	1-1/8	405
20	338	11.00	23.88	27.50	5.50	20	1-1/8	520
24	386	11.00	28.12	32.00	5.50	20	1-1/4	896

MODEL NUMBER SELECTION³

Select a size (3=29, 4=32, 6=34, 8=37, 10=68, 12=69, 14=39, 16=84, 18=85, 20=38, 24=86)

Select a PSID control range (STD: 1=1-20 or 4-20, 2=2-32 or 8-32, 4=4-57, 8=8-128; HI-FLOW: 3=3-18, 5=5-32, 7=7.5-32)

Insert "A" for pressure taps, "B" for pressure/temperature taps



NOTES

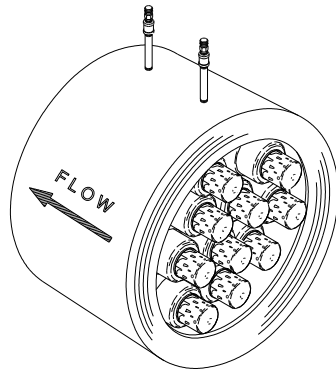
¹ Plated Steel Studs and Nuts are supplied by Griswold.
² 16" and larger are supplied with an eyebolt for lifting.
³ Model no. and flow rate are indicated on label affixed to body.
 Replaces form F-3023

This specification © 2012 Griswold Controls

2803 Barranca Parkway, Irvine, CA 92606
 (949) 559-6000 Fax (949) 559-6088
 www.GriswoldControls.com

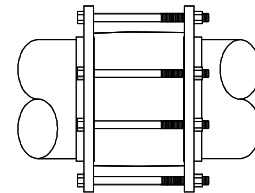
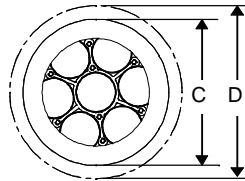
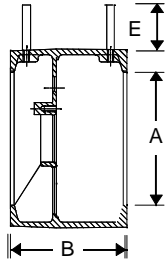


CLASS 300 WAFER



SPECIFICATIONS

PSI/Temperature Rating: 500 PSI / 350° F
Cartridge: AISI Type 304 stainless steel
 AISI Type 17-7 PH stainless steel spring
Body Material: Ductile Iron, ASTM A536-65T, Class 60-45-18
Body Tappings: 1/4" NPT with P/T test valves
Assembly: Valve comes fully assembled. Pressure and Temperature extensions are shipped loose.
Flanges: Sizes 3" - 20" are compatible with ANSI B 16.5-1968 300 lb. steel flanges. Steel flanges and are also compatible with ANSI B 16.1-1967 250 lb.



DIMENSIONS & WEIGHTS (NOMINAL)

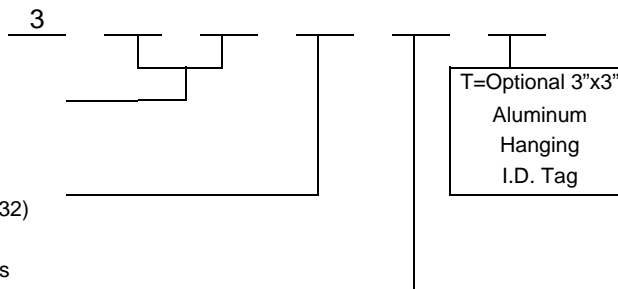
A LINE SIZE	MODEL NO.	B (+/- .030)	C (+/- .060)	D REF ONLY FLG. DIA.	E	STUDS ⁴ (SUPPLIED BY GRISWOLD)		WEIGHT (LBS.)
						QTY	SIZE	
3	345_	6.75	5.88	8.25	5.50	8	3/4	26
4	346_	7.75	7.13	10.00	5.50	8	3/4	49
6	347_	7.25	9.88	12.50	5.50	12	3/4	62
8	348_	7.25	12.13	15.00	5.50	12	7/8	103
10	343_	8.00	14.12	17.50	5.50	16	1	161
12	344_	8.00	16.50	20.50	5.50	16	1-1/8	241
14	349_	8.00	19.13	23.00	5.50	20	1-1/8	364
20 ⁵	350_	11.00	25.75	30.50	5.50	24	1-1/4	850

MODEL NUMBER SELECTION⁶

Select a size (3=45, 4=46, 6=47, 8=48, 10=43, 12=44, 14=49, 20=50)

Select a PSID control range (STD: 1=1-20 or 4-20, 2=2-32 or 8-32, 4=4-57, 8=8-128; HI-FLOW: 3=3-18, 5=5-32, 7=7.5-32)

Insert "A" for pressure taps, "B" for pressure/temperature taps



NOTES

⁴ Plated Steel Studs and Nuts are supplied by Griswold.
⁵ 20" and larger are supplied with an eyebolt for lifting
⁶ Model no. and flow rate are indicated on label affixed to body
 Replaces form F-3023

This specification © 2012 Griswold Controls

FLOW RATE TABLES PER TYPE OF CARTRIDGE (+/-5%)

TYPE OF CARTRIDGE:				STANDARD FLOW			
LINE SIZE	MODEL NO. CLASS 150	MODEL NO. CLASS 300	CONTROL RANGE (PSID)	1-20	2-32	4-57	8-128
			MAX. PRES. DIFF. (PSI)	20	32	57	128
			HEAD LOSS IN FEET ⁷	3.0	7.4	13.4	30.0
			MIN. AVAILABLE GPM	14	17.5	23.33	35
			GPM INCREMENTS	2.0	2.5	3.33	5.0
3	329_	345_	Maximum GPM	60	75	100	150
4	332_	346_	Maximum GPM	120	150	200	300
6	334_	347_	Maximum GPM	240	300	400	600
8	337_	348_	Maximum GPM	420	525	700	1,050
10	368_	343_	Maximum GPM	660	825	1,100	1,650
12	369_	344_	Maximum GPM	900	1,125	1,500	2,250
14	339_	349_	Maximum GPM	1,140	1,425	1,900	2,850
16	384_	N/A	Maximum GPM	1,440	1,800	2,400	3,600
18	385_	N/A	Maximum GPM	1,860	2,325	3,100	4,650
20	338_	350_	Maximum GPM	2,220	2,775	3,700	5,550
24	386_	N/A	Maximum GPM	3,300	4,125	5,500	8,250

TYPE OF CARTRIDGE:				STANDARD FLOW HIGH CAPACITY	
LINE SIZE	MODEL NO. CLASS 150	MODEL NO. CLASS 300	NOMINAL CONTROL RANGE (PSID)	4-20	8-32
			MAX. PRES. DIFF. (PSI)	20	32
			HEAD LOSS IN FEET ⁷	9.2	18.4
			GPM INCREMENTS	20.0	25.0
3	329_	345_	Minimum GPM	90	110
			Maximum GPM	130	160

NOTES

⁷ Head Loss in Feet is provided for pump head calculations. (1 PSI = 2.307 Feet of Water)
 Replaces form F-3023



TYPE OF CARTRIDGE:			HI - FLOW					
LINE SIZE	MODEL NO. CLASS 150	MODEL NO. CLASS 300	CONTROL RANGE (PSID)	3-18 (LOW INCREMENTS)	3-18 (NO INCREMENTS)	5-32 (LOW INCREMENTS)	5-32 (NO INCREMENTS)	7.5-32 (NO INCREMENTS)
			MAX. PRES. DIFF. (PSI)	18	18	32	32	32
			HEAD LOSS IN FEET ⁸	5.8	5.8	11.5	11.5	17.5
			GPM INCREMENTS	2.0	SEE ACTUAL FLOWS	2.5	SEE ACTUAL FLOWS	SEE ACTUAL FLOWS
3	329_	345_	Minimum GPM	N/A	N/A	N/A	N/A	N/A
			Maximum GPM	N/A		N/A		
4	332_	346_	Minimum GPM	114	200	152.5	335, 360,	500, 600
			Maximum GPM	160		275	400	
6	334_	347_	Minimum GPM	114	400	152.5	735, 760,	1000, 1200
			Maximum GPM	360		675	800	
8	337_	348_	Minimum GPM	114	700	152.5	1335, 1360,	1800, 2100
			Maximum GPM	660		1,275	1400	
10	368_	343_	Minimum GPM	114	1100	152.5	2135, 2160,	2400, 3000,
			Maximum GPM	1,060		2,075	2200	3300
12	369_	344_	Minimum GPM	114	1500	152.5	2935, 2960,	3500, 3900
			Maximum GPM	1,460		2,875	3000	4500
14	339_	349_	Minimum GPM	114	1900	152.5	3735, 3760,	4500, 5100
			Maximum GPM	1,860		3,675	3800	5700
16	384_	N/A	Minimum GPM	114	2400	152.5	4735, 4760,	5400, 6000
			Maximum GPM	2,360		4,675	4800	6600, 7200
18	385_	N/A	Minimum GPM	114	3100	152.5	6135, 6160,	6900, 7500, 8100
			Maximum GPM	3,060		6,075	6200	8700, 9300
20	338_	350_	Minimum GPM	114	3700	152.5	7335, 7360,	8700, 9300, 9900,
			Maximum GPM	3,660		7,275	7400	10500, 11100
24	386_	N/A	Minimum GPM	114	5500	152.5	10935, 10960,	13200, 14100
			Maximum GPM	5,460		10,875	11000	15300, 16500

NOTES

⁸ Head Loss in Feet is provided for pump head calculations. (1 PSI = 2.307 Feet of Water)
Replaces form F-3023

This specification © 2012 Griswold Controls

2803 Barranca Parkway, Irvine, CA 92606
(949) 559-6000 Fax (949) 559-6088
www.GriswoldControls.com

