

**SPECIFICATIONS**

- PSI/Temperature Rating:** 600 WOG (400 PSI / 250°F)
- Flow Elements:** Venturi: Brass
- Body Material:** Forged Brass ASTM B283-06
- End Connections:** Brass – NPT or Sweat
- Ball Valve Seals:** Teflon
- Union Seal:** EPDM O-ring
- Ball Valve:** Nickel-plated brass ball, full port  
Optional: Stainless steel ball
- Body Tappings<sup>1</sup>:** Two Combination P/T Test Valve and Manual Air Vent (CPTA)
- Field Repairable Stem:** Dual Teflon seals and EPDM O-ring
- Handle:** Memory Stop with graduated markings
- Assembly:** Valve comes fully assembled
- Installation:** Straight sections of piping upstream and downstream of the QuickSet aren't necessary for proper operation
- Options:** Insulation Option

**FLOW RATES (+/-1%<sup>2</sup>)**

OUTLET SIZE	MODEL NO.	FLOW GPM <sup>(3)</sup> AT 4 FT/SEC	Cv <sup>(4)</sup>	GPM RANGE FOR 5"-100" W.C. ΔP (SET W/100" GAUGE)	GPM RANGE FOR 5"-300" W.C. ΔP (SET W/300" GAUGE)
1/2", 3/4"	QS0	3.8	0.39	0.15 – 0.67	0.15 – 1.16
			1.1	0.3 – 1.4	0.3 – 2.4
			2.5	0.6 – 2.8	0.6 – 4.6
			4.2	1.2 – 5.4	1.2 – 9.4
3/4"L	QS1	6.7	0.9	0.3 – 1.4	0.3 – 2.5
			1.9	0.6 – 2.8	0.6 – 4.9
			3.9	1.3 – 5.6	1.3 – 9.7
			7.0	2.6 – 11.5	2.6 – 19.9
1"	QS1	10.8	1.8	0.6 – 2.8	0.6 – 5.0
			3.8	1.3 – 5.6	1.3 – 9.7
			7.6	2.6 – 11.5	2.6 – 19.9
			12.2	3.9 – 17.3	3.9 – 30.0
1-1/4"	QS2	18.7	10.0	3.4 – 15.0	3.4 – 26.2
			21.8	7.2 – 32.3	7.2 – 55.9
1-1/2"	QS2	25.4	22.1	7.4 – 33.0	7.4 – 57.2
			54.7	13.9 – 62.0	13.9 – 107.4
			105.2	21.6 – 96.5	21.6 – 167.1
2"	QS3	41.9	105.2	21.6 – 96.5	21.6 – 167.1

**NOTES**

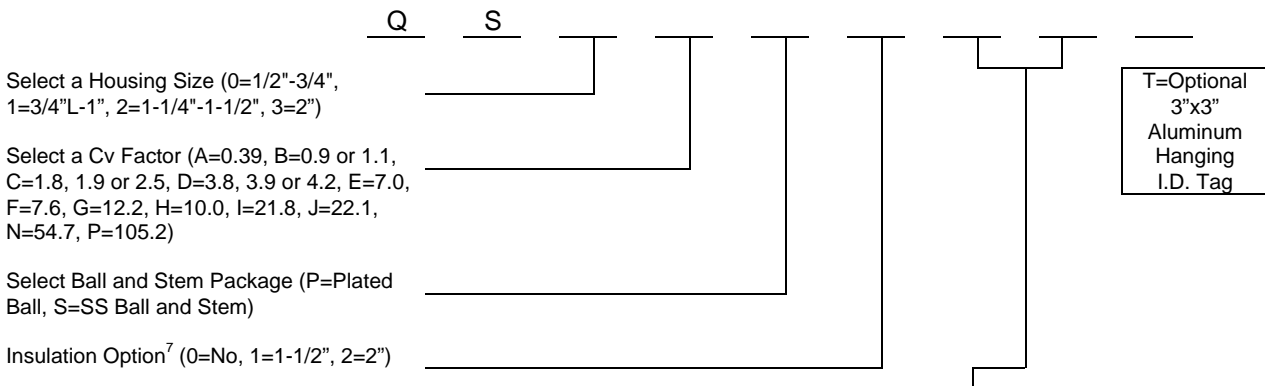
<sup>1</sup> Body Tappings for accessories are a leak proof metal to metal seal and do not require pipe dope or tape. Tape or dope should not be used.  
<sup>2</sup> Accuracy is for venturi portion of valve only. Pressure readability is dependent on accuracy of gauge.  
<sup>3</sup> The generally accepted upper limit as recommended by ASHRAE to prevent pipe noise is 4 ft/sec.  
<sup>4</sup> Cv's are used to calculate the permanent pressure drop.  $PSID = (Flow/Cv)^2$ . Use the Flow Curve for flow measurement.  
 Replaces form F-4006 and F-4326

This specification © 2013 Griswold Controls

**DIMENSIONS & WEIGHTS (NOMINAL)**

SIZE	A - FIXED END CONNECTION		B - UNION END CONNECTION <sup>5</sup>						C	D	E	WEIGHT (LBS.)		
	FNPT	SWT	FNPT		MNPT		SWT							
1/2"	2.6	2.5	1/2":1.0	3/4":N/A <sup>6</sup>	1/2":1.0	3/4":1.2	3/8",1/2":0.8		3/4":1.1	3.0	2.5	3.7	0.7	
3/4"	2.6	3.2												
3/4"L	3.0	3.1	1/2",3/4":1.0	1":N/A <sup>6</sup>	1/2"-3/4":1.0	1":1.4	3/8",3/4":1.0		1/2":0.7	1":1.3	3.8	2.6	3.7	1.0
1"	3.2	3.4												
1-1/4"	3.9	4.1	1",1-1/4",1-1/2":1.7		1",1-1/4",1-1/2":1.7		1",1-1/4":1.7		1-1/2":1.4	4.3	3.1	5.0	3.5	
1-1/2"	4.4	4.6												
2"	5.1	5.5	1-1/2":1.6	2": N/A <sup>6</sup>	1-1/2", 2":1.6		1-1/2":1.7		2":1.6	5.3	4.0	5.5	6.9	

**MODEL NUMBER SELECTION**



Valve	FIXED END OR UNION END <sup>8</sup> (No Union Tailpiece=Z)		UNION END ONLY <sup>8</sup>
	Female Threaded	Female Sweat	Male Threaded
QS0	1/2"=E, 3/4"=F <sup>9</sup>	3/8"=K <sup>10/11</sup> , 1/2"=L, 3/4"=M	1/2"=H, 3/4"=I
QS1	1/2"=E <sup>10/11</sup> , 3/4"=F, 1"=G <sup>9</sup>	3/8"=K <sup>10/11</sup> , 1/2"=L <sup>10/11</sup> , 3/4"=M, 1"=N	1/2"=H <sup>11</sup> , 3/4"=I, 1"=J
QS2 (1-1/4")	1"=G <sup>10</sup> , 1-1/4"=P, 1-1/2"=Q	1"=N <sup>10</sup> , 1-1/4"=K, 1-1/2"=W	1/2"=H <sup>10/11</sup> , 3/4"=I <sup>10/11</sup> , 1"=J, 1-1/4"=S, 1-1/2"=T
QS2 (1-1/2")	1"=G <sup>10/11</sup> , 1-1/4"=P, 1-1/2"=Q	1"=N <sup>10/11</sup> , 1-1/4"=K, 1-1/2"=W	1"=J <sup>11</sup> , 1-1/4"=S, 1-1/2"=T
QS3	1-1/2"=Q <sup>10</sup> , 2"=R <sup>9</sup>	1-1/2"=W <sup>10</sup> , 2"=Y	1-1/2"=T, 2"=U

Size reductions to the ATC of more than two line sizes may affect pressure signal of venturi depending on ATC configuration.

**NOTES**

- <sup>5</sup> For overall length, add union end connection length to body length.
- <sup>6</sup> Tailpiece is not available for this size. Male tailpiece used with coupling.
- <sup>7</sup> Insulation Option includes handle cover and Accessory extensions.
- <sup>8</sup> Select the Fixed End First and the Union End Second.
- <sup>9</sup> Tailpiece is not available for this size. Male tailpiece used with coupling.
- <sup>10</sup> Fixed end not available for this size. Union tailpiece only.
- <sup>11</sup> This tailpiece has Cv limitations. 3/8" tailpiece is not compatible with Cv of 4.2, 7.0, 7.6, 12.2; 1/2" tailpiece is not compatible with Cv of 12.2, 21.8, 22.1, 54.7; 3/4" tailpiece is not compatible with Cv of 21.8, 22.1, 54.7; 1" tailpiece is not compatible with Cv of 54.7 or 105.2; 1-1/4" tailpiece is not compatible with Cv of 105.2.

Replaces form F-4006 and F-4326

**This specification © 2013 Griswold Controls**